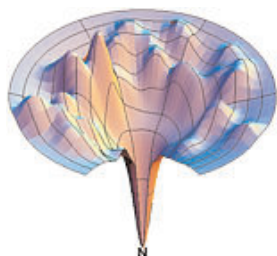
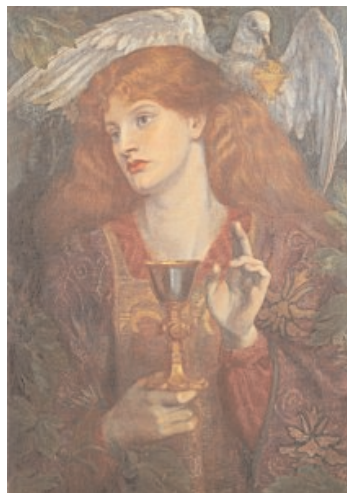


# The Marriage of Religion and Science

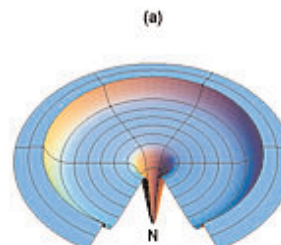
Copyright 2005 by Judy K. King



Bumpy Pit Protein Folding Funnel



The Holy Grail by Dante Gabriel Rossetti



Champagne Glass Protein Folding Funnel

Circa 1788, the English poet William Blake wrote that all Religions have the same source, which is the true Man. This is similar to Jesus Christ's statement that the "Kingdom of Heaven is within you" (Luke 17:21). Even in the Gospel of Thomas which was omitted from the Canon of the orthodox church, Jesus says, "If you bring forth what is within you, what you bring forth will save you. If you do not bring forth what is within you, what you do not bring forth will destroy you." Again, in another omitted writing, the Gospel of Mary Magdalene, the same cryptic statement surfaces: "For the Son of Man is within you." (34). Chapter Four of this same text begins with the crux of the problem: "Will matter then be destroyed or not?"

Consider that matter or humans result from gene expression within us, which happens when DNA is transcribed into RNA and translated to protein. Proteins slide along the DNA, binding and folding via their funneled energy landscapes. The term funnel was introduced to describe the energy landscape of a protein folding to its native structure by means of convergent kinetic pathways. To aid understanding, our scientists have classified these landscapes as Bumpy Pit, Champagne Glass, Pitted Moat and so on. Proteins fold differently and are guided by the funnel energy landscapes to their native structures. Water molecules play an important role in assuring the structure, stability and function of biomolecules.

Take, for instance, the Champagne Glass protein folding funnel, which is a perfect folding funnel without roughness similar to the smooth shape of the Holy Grail. Could the Kingdom of Heaven within us be a sign for a transformation due to a specific protein, binding and folding on the DNA that exhibits a perfect funnel-like energy landscape? Perhaps that is the secret of the Holy Grail. Yet, the complex Grail idea is linked deeper to the legend of the Fisher King, the Rich Fisherman who caught many fish like Christ did. Still, can we really explain the Holy Grail as a protein folding funnel and the success of the Rich Fisherman as a sign for what our biophysicists call the "fly-casting scenario for molecular recognition" during protein folding? Can we really take these two ambiguous signs for protein folding dynamics?

## Fishing for Invisible Information

One of the key discoveries of *The Isis Thesis* is that eight major Egyptian texts (Pyramid Texts, Coffin Texts, Amduat, Book of Gates, Book of Two Ways, Book of the Dead and Theban Recension, including ritual in the Edifice of Taharqa) explain the process of horizontal gene transfer mediated by bacteriophage Lambda (phage for short) in a bacterial cell. Horizontal gene transfer (HGT) is simply the exchange of DNA between two species. Thus, the Egyptian afterlife is simply the quantum domain of tiny particles where HGT occurs, and Egyptian deities represent the molecules and proteins for this transformation pathway. Put simply, the Egyptian texts claim that human information/DNA is taken up by a complex virus called bacteriophage Lambda for HGT in a bacterial cell. More and more modern scientific evidence is supporting evolutionary gene shuffling through HGT, but is life-from-death really possible? According to Avery, MacLeod and McCarty, who showed in 1944 that genetic material can be transferred from dead cells to live cells, it is possible. Thus, the Pharaohs claim that this can occur for humans after death seems probable.

Bacteriophage are very abundant in our biosphere and act as ferryboats or carrier molecules for DNA fragments. They are "eaters of bacteria" or viruses dependent on bacteria for their replication. The Egyptian texts show that phage Lambda is the carrier molecule or ferryboat for human DNA in the quantum afterlife. Accordingly, *The Isis Thesis* is centered on the discovery that 870 scientific signs in eight (8) major Egyptian texts fully describe the activities and lifestyles of bacteriophage Lambda.

In this biophysical process, the Pharaohs used an anthropomorphic viral code to explain activities at the level of DNA, where proteins bind and fold to their native structures. Their deities represent molecules and proteins describing the dynamics of phage Lambda, a complex bacterial virus exhibiting two lifestyles, lysogeny and lysis. What's interesting is that Lambdas lifestyles and chemical reactions mirror religious themes such as the dying/rising god, the cross, the brother rivalry over the throne, virgin birth and the great flood. These signs have

migrated through history to the present day, but their meaning has been effaced. It is this original, biological meaning that *The Isis Thesis* discloses, using a transdisciplinary approach grounded in biosemiotics (biology interpreted as sign systems). To follow is a brief discussion of the major Egyptian signs.

**1. The Dying/Rising God Theme.** Phage Lambda is a complex virus with two lifestyles -- lysogeny and lysis. When Lambda chooses lysogeny, it infects the bacterial host cell and becomes dormant next to the lactose genes, its DNA genome lodged in the host cell's chromosome, nailed there, so to speak, dead in the DNA. When Lambda chooses lysis, it becomes active, rising from the dead, using the lactose nutrient medium, and taking over the replication machinery of the cell to asexually produce millions of clones. The phage progeny then bursts the cell, escaping like a great flood. The dying/rising god Osiris is the anthropomorphic sign for the inactive, dormant or dead Lambda genome in the host cell DNA (lysogeny) that becomes active (lysis) by rising or excising from its dormant state.



Figure 1. Holliday Junction

**2. The Cross.** Phage Lambda enters and leaves the bacterial host chromosome by a site-specific recombination process involving a remarkable genetic cross. The DNA actually twists into a cruciform complex called a Holliday Junction (see Figure 1). The idea of the god dying on the cross or tree was passed down through history. However, this sign represents the Lambda DNA (Osiris) that enters the bacterial host cell chromosome through this genetic DNA cross and then dies, that is, goes dormant to be replicated with the host cell DNA. When Lambda leaves the bacterial host cell DNA (rises from the dead), the DNA cross forms again, so that Lambda can exit.

In the *Apocalypse of Peter*, a Greek writing circa 100 to 150 C.E. written by early Christians (that was not accepted into the New Testament by the orthodox church), the biophysical process of phage Lambda excising through the cruciform Holliday Junction is described as Christ coming "with my cross going before my face," an accurate description of the reaction. Below is the version from the Ethiopic Text, first published by the Abbe Sylvain Grebaut in *Revue de l'Orient Chretien*, 1910.

For the coming of the Son of God shall not be plain (i.e. foreseen); but as the lightning that shineth from the east unto the west, so will I come upon the clouds of heaven with a great host in my majesty; with my cross going before my face will I come in my majesty, shining sevenfold more than the sun will I come in my majesty with all my saints, mine angels.

**3. The brothers warring over the King's throne.** This recurring theme is a sign for two Lambda proteins struggling for genetic control over vegetative replication (lysogeny vs. lysis) on the Lambda DNA or genome. The Egyptian god Seth is the sign for phage Lambda repressor *cI* (c-one) protein that maintains lysogeny, and his brother Horus is the sign for phage Lambda *cro* protein (lysis). In the *Amduat* and the *Book of Gates*, proteins can be specifically identified by their helical structure as depicted in artwork, by descriptions of their activities, and by interactions with other molecules or enzymes. For example, the Lambda *cI* repressor protein (Seth) regulates phage gene expression in the lysogenic state by binding to the operator gene seat sequences before *cro* protein. The *cI* dimeric repressor has five (5) alpha helices in a bundle with helices two and three forming a helix-turn-helix. One can easily equate this five-helix bundle and its function with the image of the five-headed serpent repressing the inert Osiris in *Amduat* Hour Six (see Figure 2). In all Egyptian texts studied, Osiris rises from the dead to break the bonds of this serpentine repressor protein and activate the lytic pathway. Cellular events are clearly defined in the texts and mirror the knowledge of our modern scientists on Lambda behavior.

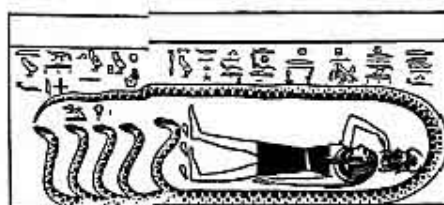


Figure 2. Amduat Hour 6 Middle Register (drawing by Budge from Seti I)

Both cro protein and the repressor cI protein are battling for three binding sites on the right arm of the Lambda genome. Cro binds first to the third site, while cI binds more favorably to the first seat. When cro binds to the third seat, the RNA polymerase can no longer transcribe cI. If cI binds to the first seat, then cro can no longer be transcribed. The Pharaohs recommended pathway of horizontal gene transfer results when cro or Horus wins these three gene seats (lysis) by binding first to the third seat. The Egyptian texts are very detailed about this battle for the operator seats. For example, in Coffin Text 1181, the victorious Deceased states: "I am he who sits on the Eye of Horus as the third." With cro protein sitting or binding the third seat, lysis occurs. Other references relating to the third seat are Pyramid Texts 266, 319, 504, 565, 685, 720; Coffin Texts 187, 198, 277, 1181. Also, in Coffin Text 277, the "Soul of the Three" refers to the three contested operator seats. In a note to this text, translator Dr. Raymond Faulkner noted the corruption of the Sun-god's epithet "Soul of the Three" to "three days." He wrote the suffix can only refer to beings, not to days. Unfortunately, this idea has been passed through history as the god rising in three days, when it actually references the god rising due to control of the "Soul of the Three" (three operator seats on the Lambda DNA), also referred to as the "head of the Three."

**4. Eye of Horus.** The whole Eye of Horus is the two arms of the Lambda genome under cro protein control. Our world of matter results from cI protein control of the left arm of the Lambda genome, whereas cro protein dominance over the right arm (which gives control over both arms) allows a return to the origin, the so-called Egyptian path to Eternity explained in *The Isis Thesis*, a pathway of horizontal gene transfer mediated by phage Lambda.

Actually, the Egyptian texts use the same terms our modern geneticists use -- arms, domains, downstream/upstream, crossing over, transformation gates, chains, and so on. In the Edifice of Taharqa at Karnak dedicated to Osiris, the dominating scene in Room E is a mound with two outstretched arms with hands open to the sky (the Christ stance), suggesting the two arms of the Lambda DNA. A falcon is centered between the arms above a lotus with the plume of *Maat* or "Truth, Rightful Order" (as Dr. Ogden Goelet translates the idea *Maat*) on the right (Plate 22), an indicator of Isis and the right order of cro binding first to the right operator sequences activating lysis. Again, the horizontal outstretched arms passed down through history mirror the genetic idea of horizontal gene transfer and full control of the balanced two arms of the Lambda DNA by cro protein for the lytic lifestyle and the Deceased's transformation.

**5. The House of 30.** The 30 base pair (bp) Lambda attachment site on the bacterial host chromosome is the Egyptian *House of 30* or Osiris *Hidden Chamber*. To follow is an excerpt from *The Isis Thesis* (p. 162, 292):

Of all the funerary texts, the Book Amduat or the Book of the Hidden Chamber explains the central Egyptian doctrine of life after death related to the transfiguration of the Deceased. This is a detailed description of horizontal gene transfer mediated by bacteriophage Lambda. The Deceased visits the Hidden Chamber of Osiris, the 30-base pair (bp) Lambda attachment site on the bacterial host chromosome next to the lactose gene (Isis). The significance of Lambda as 30 is expressed by the Greek Lambda  $\lambda$  equaling 30, which probably stemmed from the Hebrew Lamed  $\lambda$  equaling 30. Also, texts reference the *House of the 30* (Coffin Texts 277 and 688), allusions to the 30 bp Lambda attachment site on the host chromosome. . . Another interesting point that Goyon makes is that the number of elements in Amun is 30, which is also the number of the two divine colleges of Karnak.

**6. Thoth.** This major deity represents the activity of copying words, that is, transcription and replication within the host cell. Thoth was the divine messenger and the Greeks associated him with Hermes Trismegistos. In the first dynasty (c. 3050 - 2850), he is associated with a dog-headed baboon, while in later periods, he is in ibis form, carrying a pen and palette of the scribe. Thoth is the lord of the sacred and the reenactment of divine speech. In the molecular domain, Thoth is DNA-directed RNA polymerase, a molecule transcribing the DNA.

**7. Virgin Birth.** Modern genetics and Egyptian biosemiotics support that the bacterial host chromosome, a DNA tree of life, lodges the integrated dormant Lambda genome next to the gene seat for lactose. In the recently sequenced *E. coli* host chromosome, researchers found the entire integrated genome of phage Lambda. *E. coli* is a symbiotic bacteria that is present in human intestines. The Egyptian dying/rising god Osiris is the biological sign for this integrated Lambda genome, while the mother goddess Isis is the sign for the lactose genes, proteins and nutrient medium used to asexually produce phage progeny from the Lambda genome (asexual virgin birth). The result of this merger is the child Horus, a great flood of phage progeny.

**8. The Ankh.** Isis is the biological sign for the *Lac* proteins/genes responsible for production of the sugar lactose in bacteria. A remarkable DNA loop structure that looks like the Egyptian *ankh* forms at the *Lac* genes, where the Lambda genome (Osiris) is lodged on the host chromosome. This DNA loop structure, referred to as the *tiyet* or Isis-knot, represents the *Lac* repressor protein that binds to the DNA and prevents the transcription of the lactose genes (see Figure 3). In Gardiner's *Egyptian Grammar* the ideogram for the symbol of life known as the *ankh* is described as "tie or strap." The DNA loop structure ties off or blocks production of three lactose proteins necessary for the rising or excision of the Lambda genome (Osiris) from the host chromosome. In the Book of the Dead, Chapter 156 is the Chapter for a knot-amulet, stating, "You have your power, O Isis. . . The amulet is a protection for this Great One." The Isis-knot is the marker for the "Hidden Chamber" of Osiris (30 bp region) next to the lactose gene seat of Isis on the bacterial host chromosome. Similarly, the sacred symbol of the Sumerian goddess Inanna called Inanna's knot is a stylized bundle of reeds bent into a loop.

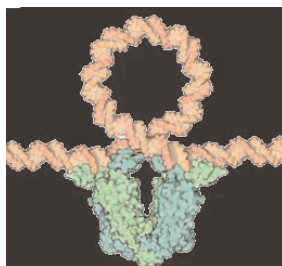


Figure 3. Lac Repressor Protein looping the DNA

To the Egyptians, Isis represented the *Magna Mater*, the great creative power nurturing all living things. Nephthys was her twin form and the consort of Seth. Isis' crown consists of a pair of horns between which is a lunar disk, sometimes surmounted by the throne symbol. Recall that the Lambda prophage lodges in the host *E. coli* chromosome at the site of the *LacZ* or *b-galactosidase* gene. With the prophage inserted here, the *LacZ* operon may be inactivated, resulting in a nonfunctional galactosidase. With the excision or removal of the prophage, this gene for lactose metabolism is vacated, leaving an empty seat, or so to speak, an empty throne. Thus, we have a possible correlation between Isis' name depicting the empty throne or seat and the potential for lactose metabolism, which is necessary for the birth of the Horus lineage. The text states, "Isis wakes pregnant with the seed of her brother Osiris," saying "His seed is within my womb, I have moulded the shape of the god within the egg" (Coffin Text 148).

**9. Egyptian Art and Architecture.** Phage Lambda is a tailed virus with an icosahedral head having 20 equilateral triangles, arranged around the face of a sphere. The icosahedron is a triangular model of five-fold symmetry in three dimensions, having 20 faces, 12 vertices, and 30 edges. The language in the funerary texts related to vertices, heads, tails and faces, along with the triangular structure of the pyramids with their tail-like causeways, mirror phage Lambda morphology (shape). In addition, the depiction of long tails on deities in the Edifice of Taharqa at Karnak and the Ramesses VI tomb drawing of an armless human with coiled legs and a sphere for a head, provide additional evidence.

**10. The Judgment Scene.** Thoth was the judge of words and presided over the testing of the soul on the arms of the balance in the Hall of Osiris. The intended meaning of the balance may not have been a judging of actions, but a "weighing of words," that is, a weighing of DNA, a balancing of the two Lambda arms, a Rightful Order decision for *cro* production and the Horus lineage. In the Book of the Dead, the heart of Osiris is balanced in one part of the scales to exactly counterbalance the feather of Rightful Order or Law in the other. The Judgment Scene is also found in the Book of Gates in the Tomb of Ramesses VI. The Fourth Division is followed by the gate of the Fifth Division, and the space between the gateway and door forms the Hall of Osiris. In this Judgment Scene the mummified Osiris, wearing the double crown, sits enthroned at the top of nine steps, and before him is a mummified figure shouldering an equalized balance, with the right balance showing an enclosed content of space greater than the left balance. In other words, the arms of the Lambda genome are balanced with both arms operative, but *cro* production on the right exceeds *cI* production on the left scale. Although *cro* production, which had been repressed by the LexA repressor protein (the monster Apopis) is greater, the genome is still balanced because the full genetic potential of the Lambda genome is realized by the joint activity of both arms for lysis. The judgment is simply a genetic judgment, a determination of protein levels between *c-one* and *cro* proteins on the scale of justice.

Also in this scene, two baboons with sticks escort the boat of a pig away from the scale of Osiris. This representation points to removal of the hedgehog gene, a master development gene promoting limb formation in all known vertebrates. Sonic hedgehog (*Shh*) functions as a genetic switch that controls critical cellular decisions between distinct fates in many systems, particularly in stem cells. Our modern scientists named the gene hedgehog because it actually had the shape of a hedgehog or pig. Beating away the pig or Seth suggests the loss of function for this gene, and the victory of Horus over Seth, or *cro* protein over *c-one* protein as represented on the scale. The Deceased Sun-god restores the Eye of Horus and *cro* protein production by activating transcription and the lytic lifestyle in the host cell so that Osiris can rise, that is, excise from the cell. This act gets the ball rolling by catalyzing Lambda second-stage rolling circle replication to produce the recombinant species. This completes the Lambda decision circuit, for human life is Lambda in the lysogenic state within us, and the lytic lifestyle is the balance of the cycle with human afterlife consciousness/DNA/information alive within Lambda.

These ten signs are just a small decoded sampling of the vast network of 870 signs in the Egyptian texts that describe evolutionary genetics. The evidence shows that biosemiotics is the key that explains signs and historical themes such as the rising/dying god, the virgin birth, the brother rivalry for the throne, the Great Flood, and the god on the cross. These great religious themes work together as an integral unit by reflecting the lifestyles and biological processes of horizontal gene transfer mediated by phage Lambda and by describing an evolutionary survival path for human DNA. Biosemiotics not only decodes the Egyptian signs, but it is also the key to long-lost signs found in myth, religion, psychology, art and literature—all of these disciplines developing or being written down after the carving of Egyptian knowledge in ancient pyramids circa 2500 BCE.

### Migrating Signs and Other Patterns

Signs have migrated through history. Thus, around 2500 BCE the Egyptian deity Osiris became the first dying/rising god, who was then dribbled down through time as Dumuzi (Sumer), Mithra (Persia), Attis (Phrygia), Adonis (Greece) and finally Jesus Christ (see Figure 4). In light of these migrations, other patterns appear.

**Horizontal Gene Transfer.** What the Egyptian texts are telling us is that horizontal gene transfer offers a passage in and out of a bacterial host cell or what our religious theologians have referred to as a hell. Similarly, the Apocryphal Gospel of Nicodemus preserves the document *Acta Pilati* (Acts of Pilate), which explains Christ's descent into the Inferno. Just as the Sun-god descends into the underworld of the *Duat* (host cell) around 2500 BCE, so does Jesus descend into the underworld around 200 CE. This adventure, however, was not admitted to the canon of the orthodox church. Further, in the omitted Apocalypse of Peter, Jesus tells Peter that there is a way out of punishment for sinners, "but thou must not tell that which thou hearest unto the sinners lest they transgress the more, and sin." Peter later orders Clement to hide this secret in a box. One surmises that the destiny of sinners could change if they possessed knowledge of the transformation path through the fiery holocaust represented by the later idea of hell.

**Nonlocality.** The Deceased in the quantum afterlife is everywhere at once, ubiquitous, essentially whole or "assuming all forms in the realm of the dead" (Coffin Text 275). Einstein called nonlocality "spooky action at a distance," whereas the Egyptian idea of *Heka* or magic in the universe seems to be equally appropriate, for the nonlocal Deceased claims in Chapter 24 of the Book of the Dead that magic has been given to him "more swiftly than a shadow." Because of Heisenberg's uncertainty principle, quantum mechanics permits nonlocality within the

wavelength of the quantum wave associated with a particle of mass "m." In other words, the point particle is spread out over the nonlocality region, which we might understand as the Deceased spread out over the *Duat* (bacterium) or a multiplicity of routes down a protein folding funnel. The texts refer to this multiplicity as "hundreds of Atums" taking possession of the Deceased (Coffin Text 99). Thus, we can begin to understand the polytheistic mindset of the Egyptians, for there are many gods or molecules in the quantum afterlife, all equally important due to the quantum magic of nonlocality.

**Rolling Circle Replication.** When Lambda takes over the replication machinery of the host bacterial cell, it switches from a bidirectional mode of replication to unidirectional rolling circle replication. Because replication is unidirectional, it continues around the genome for many cycles without colliding with an opposing replication fork. The process has been described as unrolling a roll of toilet paper, which is similar to a scroll unrolling. In the Book Revelation to John (5:1-5), a scroll is sealed with seven seals, pointing to the synthesis of ribosomal RNA in *E. coli*. The DNA sequences on the chromosome for rRNA in *E. coli* are seven contiguous operons, seals that must be broken to activate rolling circle replication for Lambda production of heads and tails for phage assembly. In the Egyptian Book of Two Ways, the Deceased states, "I make the circuit while the eye of Horus is beside me" (1042), suggesting the full function of the left and right arms of Lambda (the eye), resulting in prophage excision and the circuit of rolling circle replication. The unusual representation of the Egyptian deity Osiris bent back into a circle also signifies this.

Also related is a hymn from the early Gnostic Acts of John entitled "The Round Dance of the Cross," which is followed in the Acts by the Revelation of the Mystery of the Cross. The verses are sung by Jesus with the chorus of followers responding by saying "Amen" while dancing around him. Jesus then concludes with this remark: "If you respond to my dance, see yourself in me as I speak, and if you have seen what I do, keep silent about my mysteries. You who dance, understand what I do, for yours is this human passion I am to suffer." Christ's circle dance is the movement of rolling circle replication. Similarly, the traditional maypole dance is a folk dance from western Europe, where dancers dance in a circle, each holding a ribbon attached to a central pole. The dancers weave the ribbons around the pole, an act of circular creation pointing to second-stage rolling circle replication that occurs after Lambda rises from the dead through the Holliday Junction cross.

**Fly-casting Mechanism.** Modern biophysicists claim the fly-casting mechanism is manifested in protein binding reactions due to the flexibility of a protein that is initially unfolded, such as Lambda cro protein. Levy et al. report that Lambda cI protein forms by the "induced-fit mechanism," whereby Lambda cro protein exhibits "fly-casting" speed-up of associations. This simply means that cI folds fast, while cro is slow with a speed-up option. Compare this to the tale of the hare (cI) and the tortoise (cro). An unstructured protein like cro can have a greater capture radius for a specific binding site, giving it a kinetic advantage and enhanced speed of recognition. Lambda cro protein has the capability for forming complexes with large interfaces, possibly containing more information.

This fly-casting effect reminds one of the Fisher King in the Grail legend, who became the Rich Fisherman. The same idea appears in the New Testament (Luke 5:1-11) with Christ as the fisher of men. Fishing suggests a movement into the depths, possibly the quantum domain, to find wisdom or gnosis. When Jesus goes fishing on a bad fishing day and overloads two boats with fish, the apostles are astonished, but fearful. Yet Jesus counsels Simon, "Do not be afraid; henceforth you will be catching men." Is it possible that fishing represents the protein dynamics of the fly-casting mechanism that extracts elements for protein folding from the deep-lying source of DNA?

**Halo.** We see the quantum phenomenon of haloes on Christ, Mary, the saints, the Buddha, Krishna and others. The halo is a threshold phenomenon due to quantum mechanical tunneling, an activity of the Deceased that is evident in the texts. Modern researchers consider the quantum halo a new form of matter that displays essential quantum features common to all microscopic matter. Haloes also aid understanding of element production in stars and supernovae. When a star ends its life as a supernova, it uses up all its hydrogen, converts elements up to iron, then explodes, thrusting debris into space and leaving a neutron star. During the explosion, the collapse of the core creates a shock wave that accelerates neutrons that are created. These neutrons combine with nuclei of lighter elements to produce elements heavier than iron. The neutron-rich elements are returned explosively to interstellar space, where they form new stars. Some of these nuclei form a halo outside the core. Other kinds of haloes are formed by Borromean systems, two neutrons bound to a core with fields that partly overlap. Also, the tendency to tunnel past the classical limit actually makes haloes bigger in the quantum world.

### Challenging the Legacy of Ignorance

As humans, we must stretch to think and imagine in new ways, as we answer questions by seeing that Science and Religion is a marriage embedded in quantum phenomena. We must discover whether or not this chemical act of species rebirth through horizontal gene transfer is the final stage of human evolution or a new seed for the expansion of human intelligence. Jesuit priest and paleontologist Pierre Teilhard de Chardin simply stated that the same life animates both Religion and Science. In the *Phenomenon of Man* (1959), he traces the rise of consciousness from the cell to *Homo Sapiens*, claiming that by death a man can escape from entropy and become the super-man, *an organic super-aggregation of souls*. He considers this outcome an offshoot of the evolutionary tree of consciousness, what he refers to as *a new step in the genesis of the mind*. To achieve this, one must give up his ego or his personality, a familiar echo from the Tibetan Book of the Dead, which also emphasizes the importance of merging with the Light. Pierre writes that *each ego is destined to be forced convulsively beyond itself into some mysterious super-ego*. (1978, 38) He describes this process in the following prayer to Lord Jesus:

What I discern in your breast is simply a furnace of fire, and the more I fix my gaze on its ardency the more it seems to me that all around it the contours of your body melt away and become enlarged beyond all measure, till the only features I can distinguish in you are those of the face of a world which has burst into flame. (131)

Then Pierre writes, "Lord, lock me up within you." At this point, it seems as if he is merging with either the Egyptian Lambda Sun-god or, as the pre-Buddhist Bon civilization of Tibet would say, *a great mass of light, the Buddha of Immortal Light*. What is remarkable about the Judaeo-Christian tradition, the Tibetans and other creeds is that they have preserved Egyptian religious ideas 5,000 years old that harbored

an amazing science, describing the final option for evolution--horizontal gene transfer. Now, we can trace the rise of human consciousness on an evolutionary circle, beginning with the first prokaryotic lysogen 3.8 billion years ago that harbored a Lambda genome for eukaryotic evolution. To this viral world-heart we return for a second option--resurrection with its prophage as *Homo Sapiens Lambda*. Thus, Osiris is the *Alpha* and the *Omega*, or--as the sacred Gnostic text *Thunder* suggests--Isis is "the first and the last." So it is that the Pharaohs professed a religion of science that was emulated, but misunderstood by religious traditions.

And the Holy Grail? Is it the chalice of the Last Supper or a sign for Mary's womb? Was it fashioned by angels from an emerald that dropped from Lucifer's forehead when he was hurled into the abyss? Or is it an effaced sign pregnant with the possibility of human transformation through horizontal gene transfer mediated by phage Lambda? The challenge is yours.

## References

- Avery, O. T., Macleod, C. M., and M. McCarty. 1944. Studies on the chemical nature of the substance inducing transformation of pneumococcal types. February 2. Reprint: The Oswald T. Avery Collection at National Library of Medicine
- Barnstone, Willis, and Meyer, Marvin, eds. 2003. *The Gnostic Bible*. Boston & London: Shambhala.
- Chardin, P. Teilhard de.  
1959. *The phenomenon of man*. London: Wm. Collins Sons & Co., Ltd. New York: Harper & Row, Publishers, Inc.  
1978. *The heart of matter*. San Diego, New York: Harvest Book, Harcourt, Inc.
- Chan, Hue Sun, and Dill, Ken A. 1998. Protein folding in the landscape perspective: Chevron plots and non-Arrhenius kinetics. *Proteins: structure, function, and genetics*. January, 30(1): 2-33. "Bumpy Pit" and "Champagne Glass" images-thank you.
- Doxey, Denise M. 2002. *Thoth. Ancient gods speak: a guide to Egyptian religion*. New York: Oxford University Press.
- Early Christian Writings. Gospel of Nicodemus. <http://www.earlychristianwritings.com/actspilate.html>  
Apocalypse of Peter, Ethiopic Text. <http://www.earlychristianwritings.com/text/apocalypsepeter-mrjames.html>
- Faulkner, R. O.  
1969. *The ancient Egyptian pyramid texts*, 2 Vols. Oxford: Oxford University Press  
1973-78. *The ancient Egyptian coffin texts*, 3 Vols. Warminster: Aris & Phillips Ltd.  
1998. *The Egyptian book of the dead*. Commentary by Dr. Ogden Goelet, Jr. San Francisco: Chronicle Books.
- Gardiner, A. 1927. *Egyptian Grammar, being an introduction to the study of hieroglyphs*. Cambridge, United Kingdom, Third Edition 1957.
- Gopaul, D. N., Guo, F., and Van Duyne, G. D. 1998. Structure of the Holliday junction intermediate in Cre-loxP site-specific recombination. *Embo Journal*. 17(14): 4175-4178
- Holliday, R. 1964. A mechanism for gene conversion fungi. *Genet. Res.* 5: 282-304
- Jia, H., Satumba, W. J., Bidwell III, G. L., and Mossing, M. C. 2005. Slow assembly and disassembly of Lambda Cro repressor dimers. *J. Mol. Biol.* 350: 919-929.
- King, J.K. 2004. *The Isis Thesis*. Gaylord: Envision Editions, Ltd.
- Lai, K., Robertson, M. J., and Schaffer, D. V. 2004. The sonic hedgehog signaling system as a bistable genetic switch. *Biophys. J.* May; 86(5): 2748-2757.
- Levy, Y., Papoian, G. A., Onuchic, J. N., and Wolynes, P. G. 2004. Energy landscape analysis of protein dimers. *Israel Journal of Chemistry*, 44: 281-297.
- Levy, Y., Wolynes, P. G., Onuchic, J. N. 2004. Protein topology determines binding mechanism. *PNAS*, January 13. 101(2): 511-516.
- Nicholl, Desmond S. T. 2002. *An introduction to genetic engineering*, second edition. Cambridge University Press
- Parker, R. A., J. LeClant, and J-C Goyon. 1979. *The Edifice of Taharqa by the Sacred Lake of Karnak*. Translated from the French by Claude Crozier-Brelot. Providence, London: Brown University Press.
- Sevilla-Sierra, P., G. Otting, and K. Wuthrich. 1994. Determination of the nuclear magnetic resonance structure of the DNA-binding domain of the P22 c2 repressor (1 to 76) in solution and comparison with the DNA-binding domain of the 434 repressor. *Abstract. J. Mol. Biol.* Jan. 21, 235(3): 1003-20
- Skorobogatyy, M., Guo, H., and Zuckermann, M. 1997. Relaxation in a perfect funnel. *Phys.Rev.* June, 55(6): 7354-7363.

**Judy K. King, M.A. is a former college English instructor and author of *The Isis Thesis, a study decoding 870 ancient Egyptian signs*, and *The Road from Orion, a surreal story supporting The Isis Thesis*.**

**For more information, see [www.isisthesis.com](http://www.isisthesis.com)**

**Email: [contactus@isisthesis.com](mailto:contactus@isisthesis.com)**

<b>Osirian Signs</b> c. 2500 BCE	<b>Biosemitotic</b> <b>Meaning</b>	<b>Sumer/Babylonia</b> c. 2500 BCE	<b>India</b> c. 1500 BCE	<b>Greece</b> c. 775 BCE	<b>Bible</b> c. 600 BCE to c. 100 CE
Sun-god on Bark and Great Flood of Osiris	Horizontal Gene Transfer (HGT) mediated by phage Lambda (a ferryboat for human DNA) and resultant flood of phage progeny	1) Utanapishtim on Ark survives Flood (from clay tablets in <i>Gilgamesh</i> ) 2) Ziusudra and huge boat of beasts survive flood and win eternal life (from clay tablets c. 1750 BCE [from Campbell])	Shiva-Rudra destroys life by Great Flood and golden egg floats with seed of all forms	1) Zeus floods earth and Deucalion and Pyrrha survive on 2) Jason and the ship Argo	Noah and Ark in Flood (9th century Jehovistic version of Genesis 6:19 and Priestly version of Gen. 7:2) [from Campbell]
Mother-goddess Isis	Lactose for Lambda HGT	Ishtar, Innana, Tiamat	Kali	Gaea	Mary
Isis hovers over Osiris like hawk, bringing him back to life and conceiving the Horus child	Virgin birth or asexual genesis or parthenogenesis or viral cloning	1) Persian Mithra born from Generative Rock 2) Attis of Phrygia born of Virgin Nana	1) Maya - the virgin aspect of the triple Hindu Goddess 2) Buddha born of virgin Maya 3) Krishna born of virgin Nari	1) Gaea, without any partner gave birth to Uranus 2) Dionysus born after the serpent visited Persephone [Frazer]	Jesus Virgin Birth from Mary
Warring brothers Horus v. Seth for throne of Osiris	cro v. cl protein over DNA gene seats	1) Gilgamesh v. Enkidu 2) Also a 2050 BCE text on argument between farmer and shepherd for for Inanna's favor (she chooses farmer)	Brothers Rama v. Bharata over throne in <i>Ramayana</i>	1) Eteocles versus Polyneices over throne of Thebes (Oedipus sons) from Aeschylus 2) Atreus v. Thyestes over Argos throne	Agriculturalist Cain kills Abel, keeper of sheep like Hebrews
Dying/Rising God Osiris (c. 4500 BCE, a myth existed of earth-goddess fertilized by moon bull who dies/resurrects)	Model of two lifestyles of phage Lambda (lysis and lysogeny)	1) Tammuz (Sumerian Dumuzi) 2) Mithra (Persian saviour) 3) Attis (Phrygia)	Vishnu's 3 forms: life, death, rebirth 1) Brahma creates 2) Shiva-Rudra destroys 3) Vishnu preserves	1) Adonis 2) Dionysus 3) Attis of Phrygia [Frazer]	Jesus Christ
The Cross or Tree (Lambda DNA Tree or World-heart); Myth of Osiris nailed in chest lodged in large tree [Plutarch]	Cruciform DNA resulting from Holliday Junction for integration/excision of Lambda DNA on host cell chromosome	Mithra born from Generative Rock by sacred stream near sacred Tree	1) Banyan Tree is symbol of India; tree is so dense it blots out Sun 2) In the Upanishads, Mover of Tree of Universe	In Boeotia, one of his titles was Dionysus in the Tree [Frazer]	1) Tree of Life v. Tree of Good and Evil 2) Christ on cross or redemption by cross
<b>References</b>					
Campbell, Joseph. 1962. <i>Oriental Mythology: the Masks of God</i> . New York: Penguin Books					
Frazer, Sir James G. 1922. <i>The Golden Bough</i>					
King, Judy K. 2004. <i>The Isis Thesis</i>					
Rosenberg, Donna. 1994. <i>World Mythology: An anthology of the Great Myths and Epics</i> . Lincolnwood, IL: NTC Publishing Group					
<b>Figure 4. Syncretistic Migration of Myth through Time</b>					